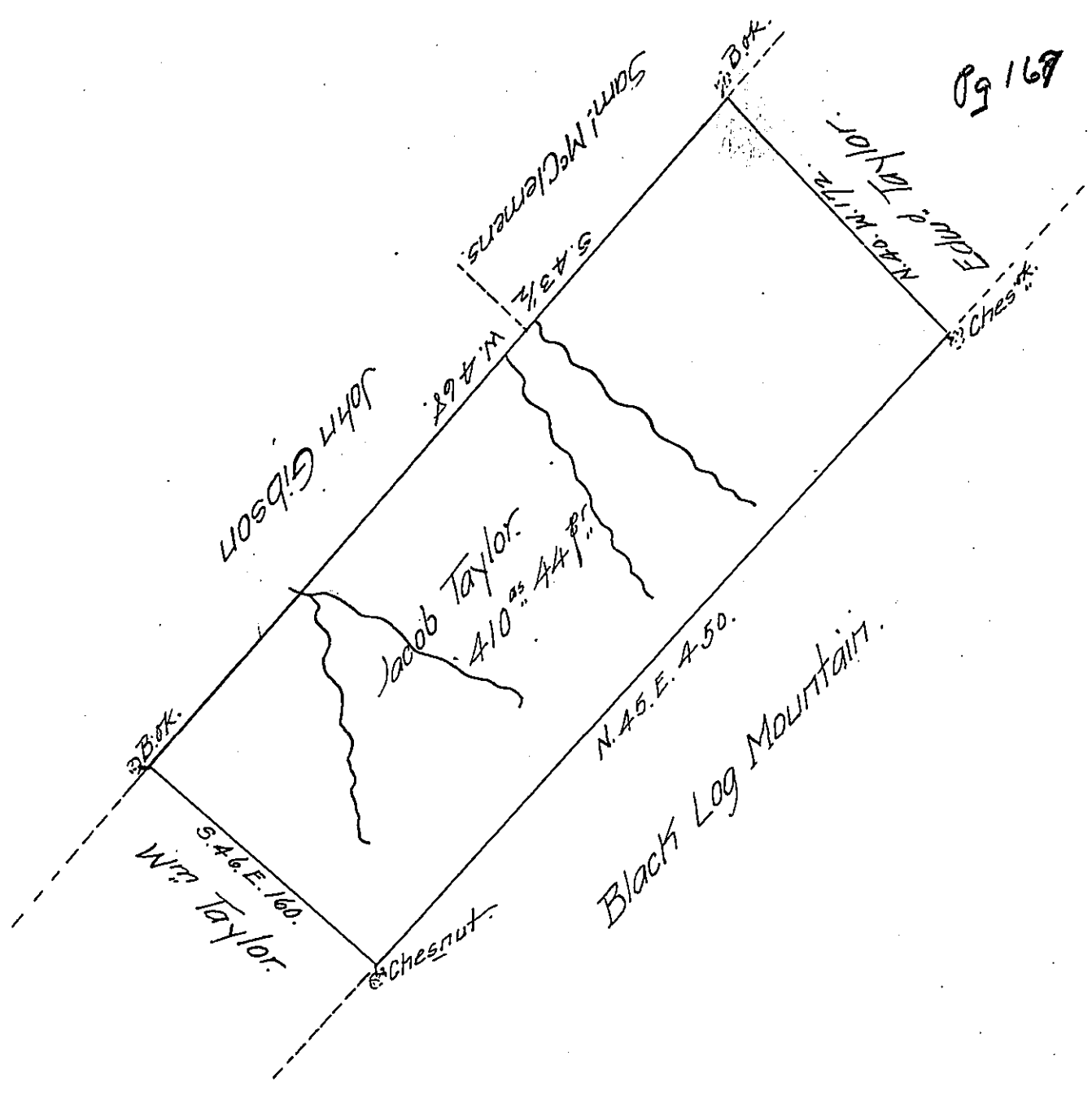


pg 168



Situate in Huntingdon County Shirley Township adjoining Sarr<sup>l</sup> McClemens John Gibson W<sup>m</sup> Taylor & Edward Taylor On the West Side of the Black Log Mountain Containing 410<sup>as</sup> 44<sup>pr</sup> perches & the Usual Allowance of Six per Cent for Roads Surveyed the 5<sup>th</sup> Day of July 1794. In pursuance of a Warrant dated the 2<sup>d</sup> Day of June 1794.

John Carran D.S.

To Daniel Brodhead Esq<sup>r</sup>  
Surveyor General.

IN TESTIMONY that the above is a copy of the original remaining on file in the Department of Internal Affairs of Pennsylvania, made conformably to an Act of Assembly approved the 16th day of February 1833, I have hereunto set my hand and caused the Seal of said Department to be affixed at Harrisburg, this thirtieth day of April 1907

*Spencer P. Brown*  
Secretary of Internal Affairs.